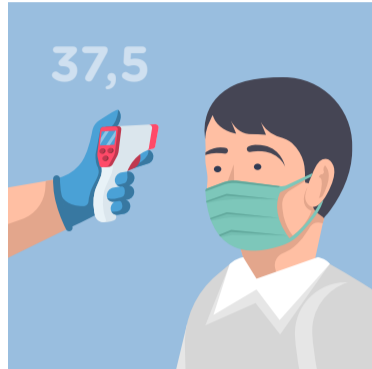


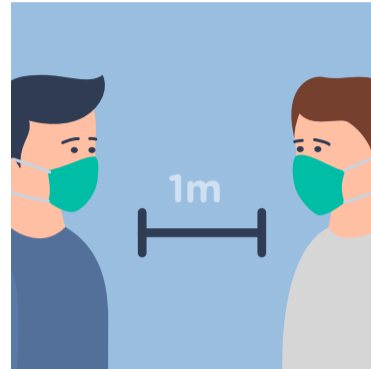
Guidelines on Prevention of Transmission and Spread of COVID-19



Wash your hands with running water and soap before entering the church hall



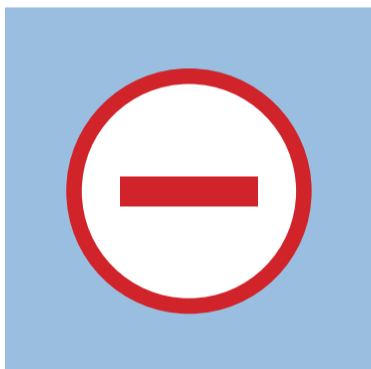
If the temperature is $> 37.5^{\circ}\text{C}$, he/she is not permitted to enter the church



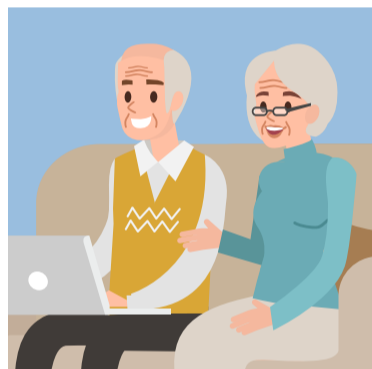
Ensuring compliance with the rules of distance while in the church environment



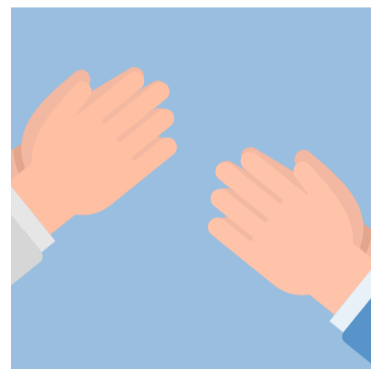
Wear a mask that covers the nose and mouth



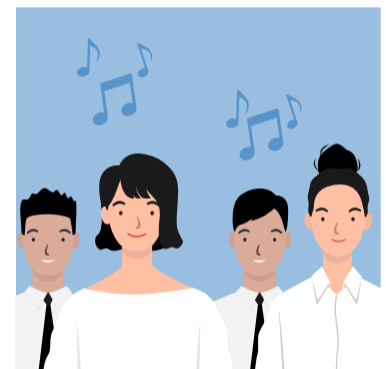
Limit the number of the divine service participants to 50% capacity of church space



Members who are at high risk of Covid-19, are being asked to attend divine services at home



Greet under adherence to the rules of keeping distance without shaking hands



Choir presentation are limited by a maximum of 4 participants, without wearing masks



When singing, you are requested to join in the singing while still wearing a mask



Keep wearing the mask when receiving the host and say the word "Amen" gently



Partake the communion wafer in each seat



Immediately leave the church building after the service was over

